

CAT 3516 DI Engines and Ancillaries



Standard Features:

- * Rating 2000kW, 2500kVA
- * Diesel Fuel
- * 4160 Volt
- * 3 Phase
- * Tramount Day Tank Fuel Control System
- * Fuel Oil Cooler
- * Automatic Battery charging
- * Air Starter System
- * Powell Generator Paralleling Gear
- * Fuel Transfer Pump System
- * Turbocharger/Aftercooled
- * Transformer 4160/480
- * Master Control System
- * Air Compressor
- * Cooling Tower Fans
- * Full service history and manuals

CAT 3516 DI - 2 MW Diesel Generators

Originally installed by Caterpillar in 1991, within the Thermal Energy Corporation site, to provide 6 MW emergency power to the St. Luke's Episcopal Hospital and Texas Children's Hospital. The hospitals decided to sell their assets and utilize power from the Thermal Energy Corporation.

These CAT 3516 diesel generators are widely used engines and are in high demand. This plant includes three generators, skid mounted, each with its own day tank fuel control system, fuel oil cooler, master control system, air starter system, radiator, and muffler. The engines have 820, 809, and 427 hours.

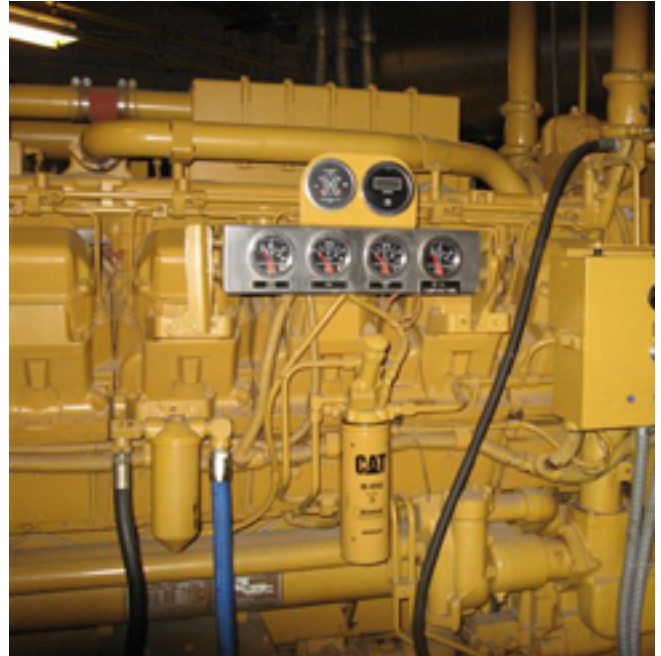
The ancillaries include air compressors, vertical air receivers, overhead crane system, paralleling gear, circuit breaker, ground fault circuit interrupter, cooling tower fans, auxiliary breaker panel, 4160/480 transformer, automatic battery charger, automatic transfer switch, lighting transformers, exhaust fans, and a fuel transfer pump system.

Services can be provided to convert these generators to 50Hz, to containerize the generators, or to provide a dual fuel system to provide for natural gas and diesel fuel consumption.

CAT 3516 DI Engines and Ancillaries

Engine

Manufacturer	Caterpillar
Engine	3516 DI
Rating	2000 kW , 2500 kVA
Cylinders	16
Displacement	69 liters
Bore	6.7 in. (170 mm)
Stroke	7.5 in. (190 mm)
RPM	1800 rpm
Phase	3 Phase
Voltage	4160
Fuel	Diesel
Frequency	60 hz
Aspiration	Turbocharged/Aftercooled
Governor	Hydra-Mechanical



Ancillaries

Air Starter System	Rustan diesel powered 2 cylinder/2 stage reciprocating air compressors
Power Switching	Powell Paralleling Gear, 1200 amp circuit breaker, ground fault interrupter
Transformers	Step Down 4160 v / 480 v 37.5 kVA Lighting
Master Control System	MBC6TC 24 volt 10 amp
Battery Charging System	L3CINC20 Automatic
Cooling System	36" Exhaust Fans, Outside Mufflers, YoungFin 72" Radiator

